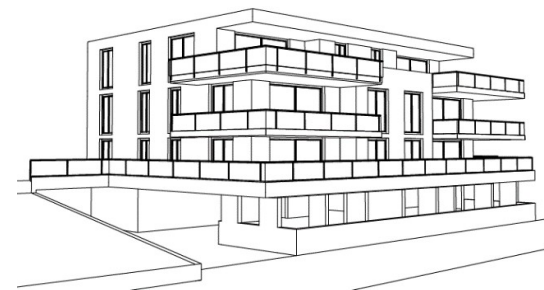


# MFH Schlüocht 2 Ried-Brig



## Variante 3.5-Zimmerwohnungen

	Whg.-Nr.	Zimmer	NWF	BWF	Balkon / Terrasse	Preis
<b>Erdgeschoss</b>	0.1	4.5-Zi Whg	108.00 m <sup>2</sup>	125.00 m <sup>2</sup>	125.00 m <sup>2</sup>	reserviert
<b>Erdgeschoss</b>	0.2	5.5-Zi Whg	121.40 m <sup>2</sup>	140.50 m <sup>2</sup>	140.00 m <sup>2</sup>	CHF 840'000.00
<b>1. OG</b>	1.1	3.5-Zi Whg	80.00 m <sup>2</sup>	95.80 m <sup>2</sup>	31.00 m <sup>2</sup>	CHF 615'000.00
<b>1. OG</b>	1.2	3.5-Zi Whg	77.50 m <sup>2</sup>	91.00 m <sup>2</sup>	31.00 m <sup>2</sup>	CHF 585'000.00
<b>1. OG</b>	1.3	3.5-Zi Whg	68.60 m <sup>2</sup>	80.00 m <sup>2</sup>	15.00 m <sup>2</sup>	reserviert
<b>2. OG</b>	2.1	6.5-Zi Whg	192.70 m <sup>2</sup>	225.00 m <sup>2</sup>	114.00 m <sup>2</sup>	reserviert

**Einstellplatz**

**CHF 39'500.00**



 **ANDEREGGEN AG**

13.03.2025